

# APPENDIX 5

---

## *Standard Details*

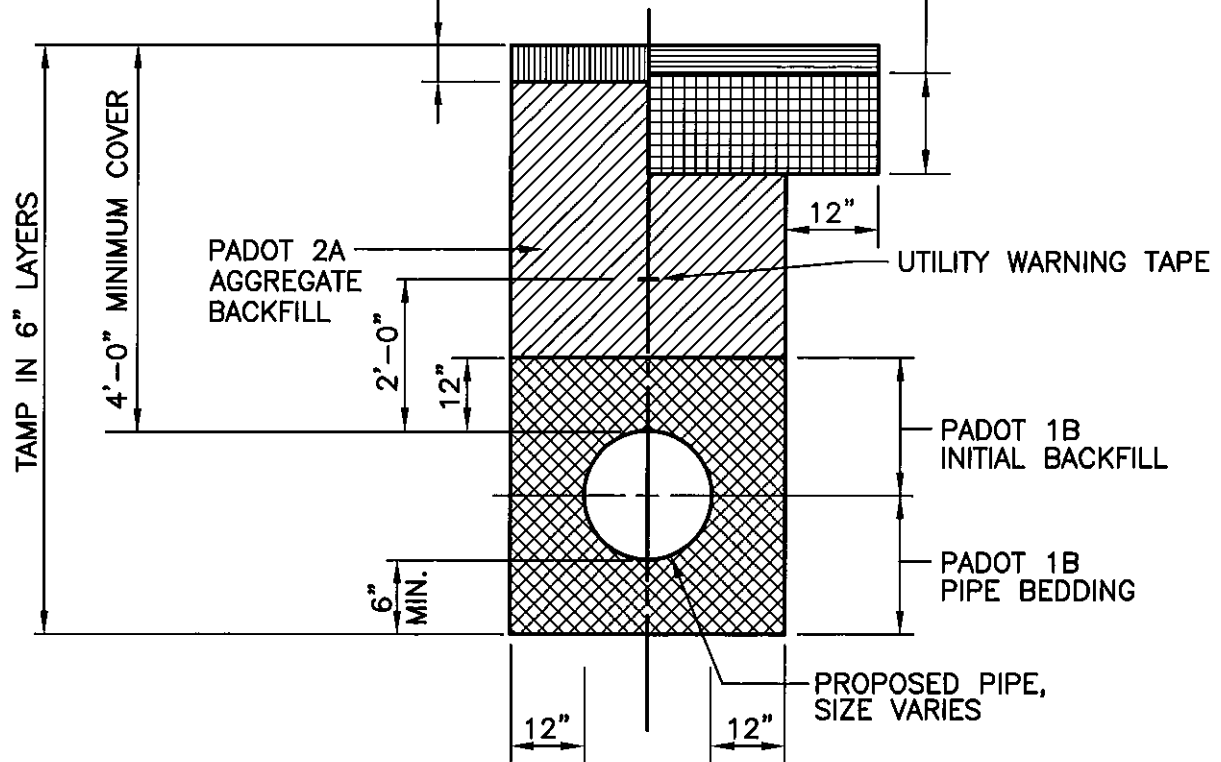
<u>Standard Details</u>	<u>Detail No.</u>
Backfill and Pavement Restoration Detail – State/Borough/Township Roads	1
Trench Restoration - Lawn/Agricultural Areas	2
Combined Trench Detail – Sewer Lateral/Water Service Line – State/Borough/Township Roads	3
Combined Trench Detail – Sewer Lateral/Water Service Line – Lawn/ Agricultural Areas	4
Standard Water Main Crossing Above Utilities	5
Standard Water Main Crossing Beneath Utilities	6
Standard Water Main Crossing Utilities Using Fittings	7
Standard Valve Installation Detail	8
Standard Fire Hydrant Setting Detail	9
Standard Casing Cradle Detail	10
Standard Concrete Encasement Detail	11
Typical Blow-off Hydrant Detail	12
Restrained Pipe Length Schedule	13
Fire Service Setting Detail – Vault Installation (Special Exception Only)	14
Fire Service Setting Detail – Building Installation	15
Domestic Meter Setting Detail – Vault Installation – Utilizing Meters 3" & Larger (Special Exception Only)	16
Domestic Meter Setting Detail – Building Installation – Utilizing Meters 3" & Larger	17
Combination Fire & Domestic Meter Setting Detail – Vault Installation (By Special Exception Only)	18
Standard Water Service Line Installation (Roadway with Curbing)	19
Standard Water Service Line Installation (Behind Curb & Sidewalk)	20
Standard Water Service Line Installation (Roadway w/o Curbing)	21
Standard Residential Domestic Water Meter Setting Detail	22
Sinkhole Remediation	23



TEMPORARY

PERMANENT

PER PA DOT SPECIFICATIONS



ALL WORK TO BE DONE IN ACCORDANCE WITH PADOT  
PUBLICATION 408 WHEN IN PADOT R.O.W.

**Quarryville Borough Authority**

**STANDARD DETAIL - WATER SYSTEM**

**ARRC**

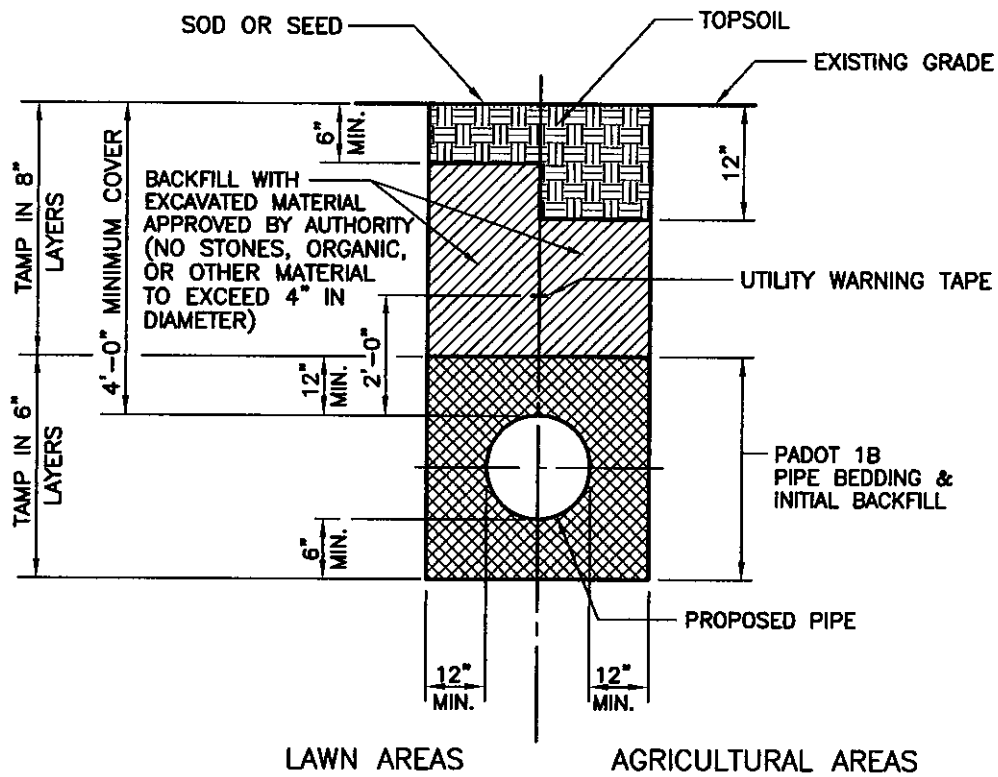
108 West Airport Road  
Lititz, Pennsylvania 17543  
Tel 717.569.7021

**BACKFILL AND PAVEMENT RESTORATION  
DETAIL FOR STATE/BORO/TWP ROADS**

DATE:  
OCTOBER 2016

DETAIL:  
1

Dwg. Name: 00221052.DWG Plotted: 4/6/2020 7:26 AM



Quarryville Borough Authority

STANDARD DETAIL - WATER SYSTEM

**ARRC**

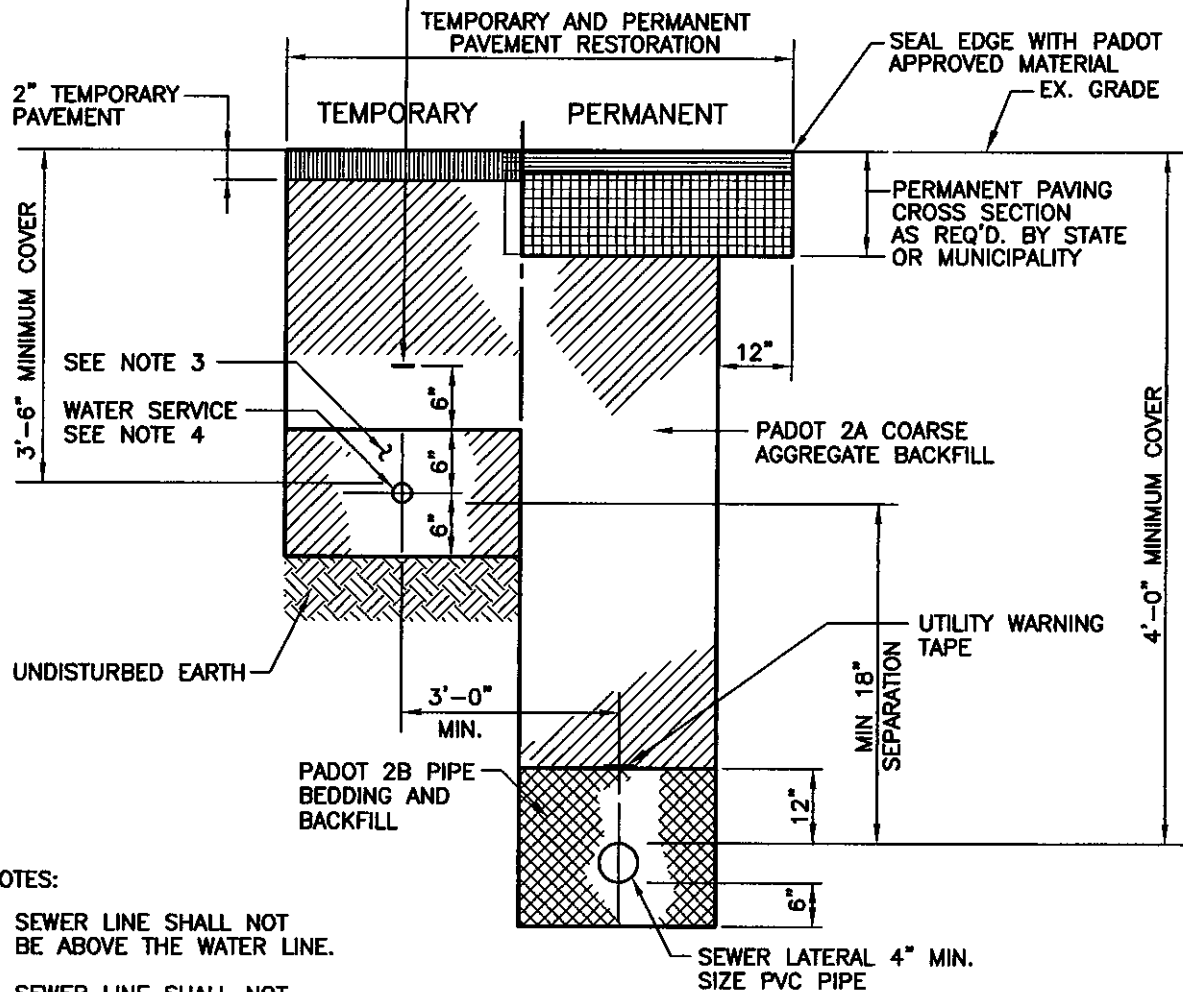
106 West Airport Road  
Lititz, Pennsylvania 17543  
Tel 717.569.7021

TRENCH RESTORATION  
LAWN/AGRICULTURAL AREAS

DATE:  
APRIL 2020

DETAIL:  
2

MAGNETIC (OR APPROVED EQUAL)  
LOCATING TAPE IF POLYETHYLENE  
PIPE IS USED



NOTES:

1. SEWER LINE SHALL NOT  
BE ABOVE THE WATER LINE.
2. SEWER LINE SHALL NOT  
CROSS THE WATER LINE.
3. CLEAN TOP SOIL (WHEN COPPER  
SERVICE LINE IS USED)
4. WATER SERVICE LINE MIN. 3/4" TYPE K  
COPPER (MAIN TO CURB STOP)

Quarryville Borough Authority

STANDARD DETAIL - WATER SYSTEM

**ARRC**

108 West Airport Road  
Lititz, Pennsylvania 17543  
Tel 717.569.7021

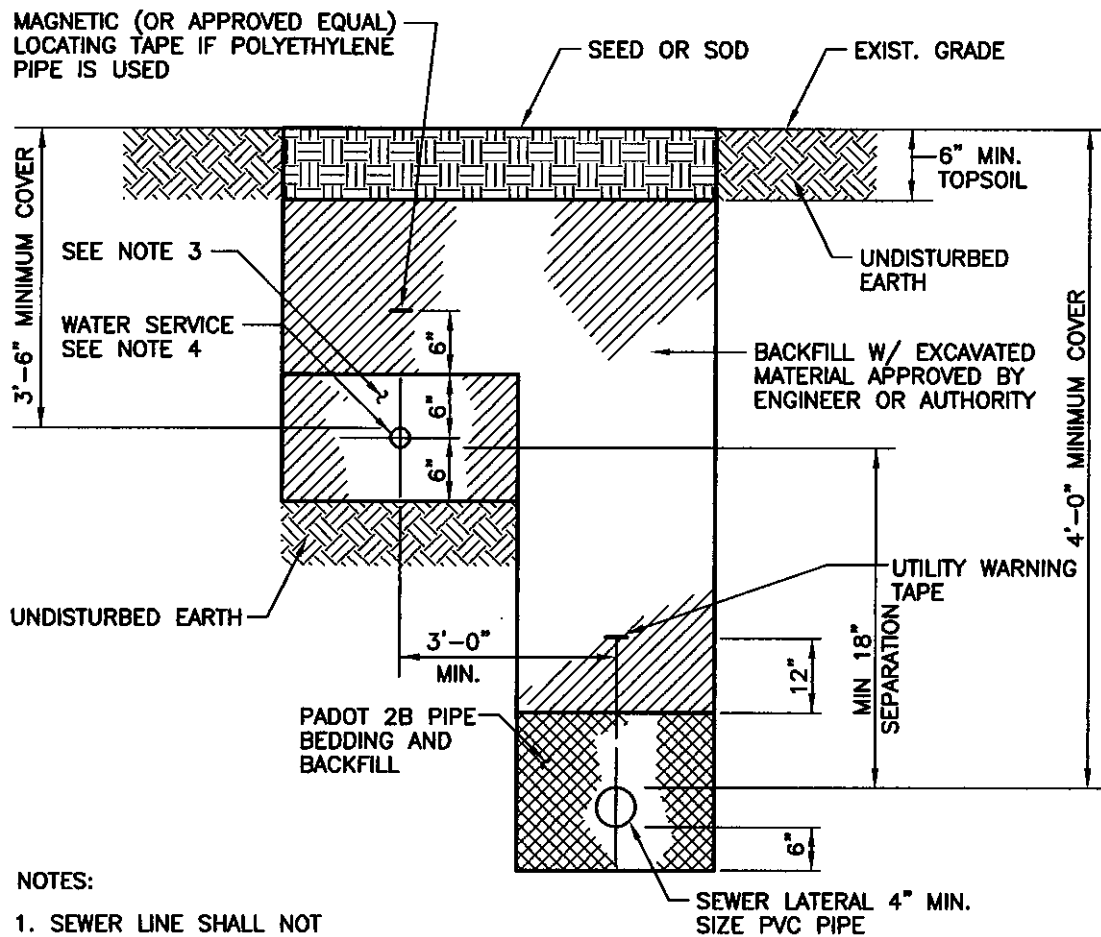
COMBINED TRENCH DETAIL SEWER LATERAL/  
WATER SERVICE LINE STATE/BORO/TWP. ROADS

DATE:

APRIL 2020

DETAIL:

3



NOTES:

1. SEWER LINE SHALL NOT BE ABOVE THE WATER LINE.
2. SEWER LINE SHALL NOT CROSS THE WATER LINE.
3. CLEAN TOP SOIL (WHEN COPPER SERVICE LINE IS USED)
4. WATER SERVICE LINE MIN. 3/4" TYPE K COPPER (MAIN TO CURB STOP)

Quarryville Borough Authority

STANDARD DETAIL - WATER SYSTEM

**ARRC**

108 West Airport Road  
Litz, Pennsylvania 17543  
Tel 717.569.7021

COMBINED TRENCH DETAIL SEWER LATERAL/  
WATER SERVICE LINE LAWN/AGRICULTURAL AREAS

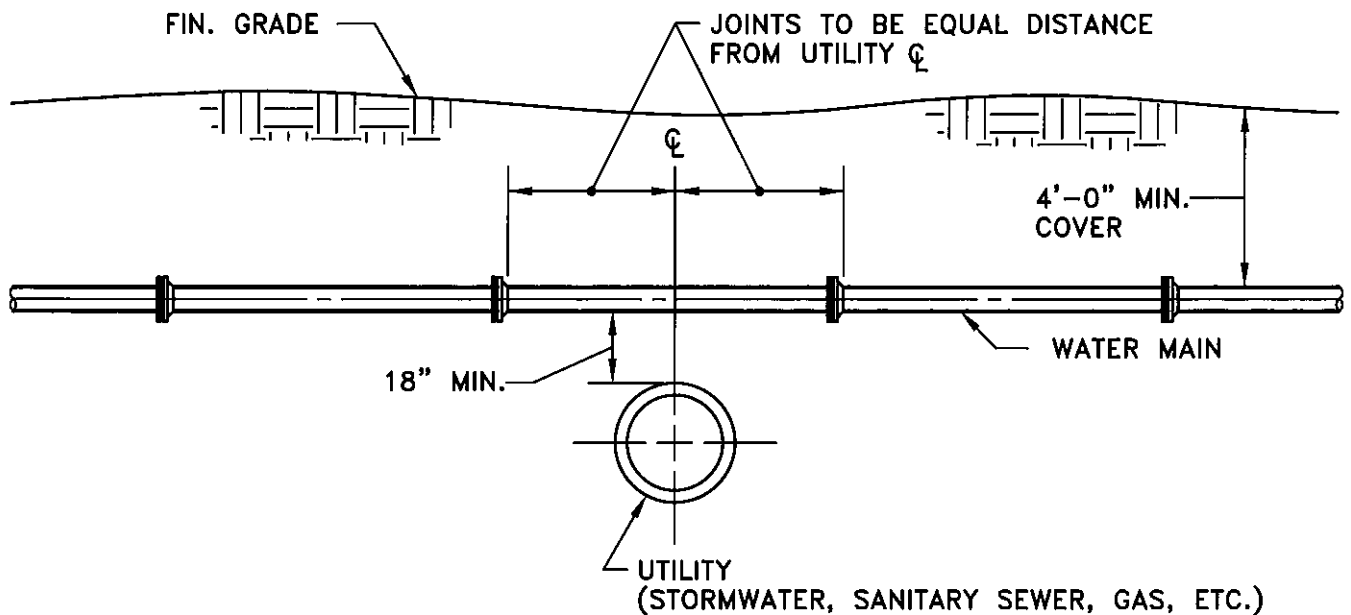
DATE:

APRIL 2020

DETAIL:

4

Dwg. Name: 00221094.DWG Plotted: 10/12/2016 12:47 PM



- NOTE: 1. THE UTILITY OWNER MAY, AT THEIR DISCRETION AND IN CONSULTATION WITH THE BOROUGH, REQUIRE CONCRETE ENCASEMENT OF EITHER THE UTILITY OR THE WATER LINE.
2. THE 18" VERTICAL SEPARATION CAN BE REDUCED TO A MINIMUM OF 6 INCHES, UTILIZING STEEL CASING PIPE WITH THE BOROUGH'S APPROVAL.

**Quarryville Borough Authority**

**STANDARD DETAIL - WATER SYSTEM**

**ARRCO**

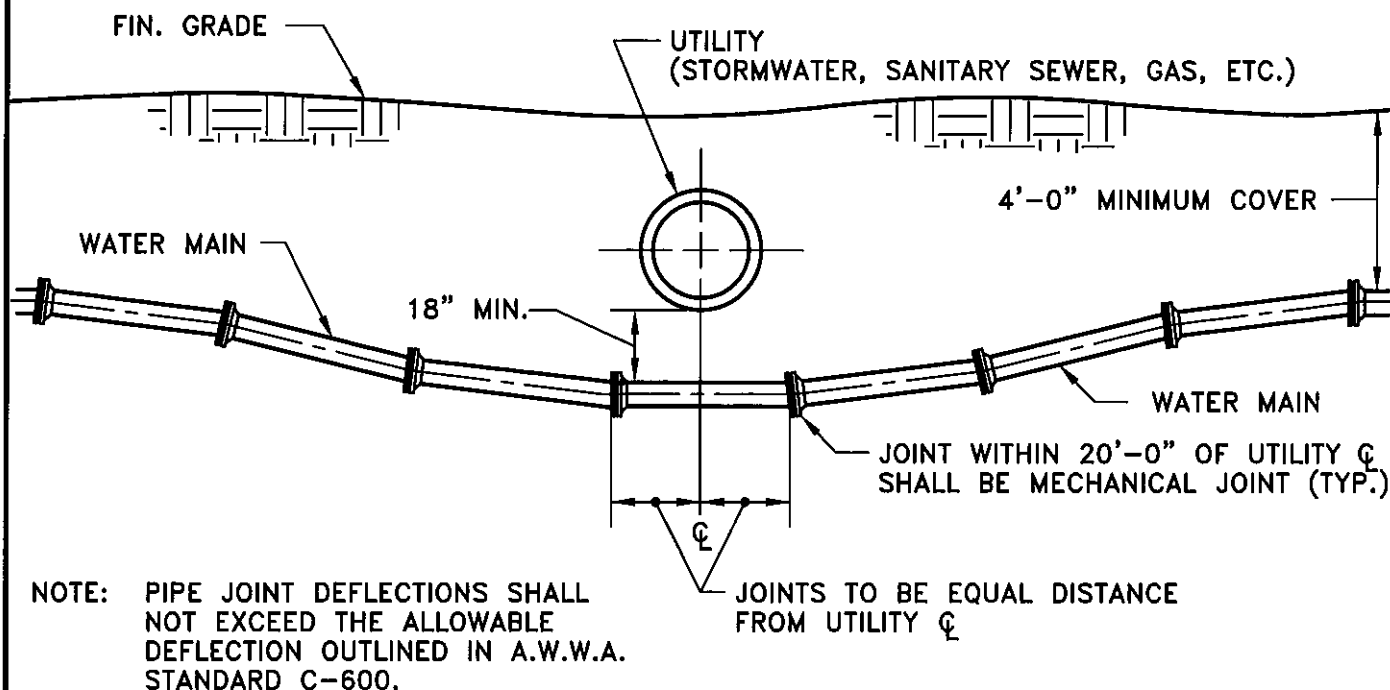
108 West Airport Road  
Lifitz, Pennsylvania 17543  
Tel 717.569.7021

**STANDARD WATER MAIN  
CROSSING ABOVE UTILITIES**

DATE:  
OCTOBER 2016

DETAIL:  
5

Dwg. Name: 00221095.DWG Plotted: 10/12/2016 12:47 PM



- NOTE: 1. THE UTILITY OWNER MAY, AT THEIR DISCRETION AND IN CONSULTATION WITH THE BOROUGH, REQUIRE CONCRETE ENCASEMENT OF EITHER THE UTILITY OR THE WATER LINE.
2. THE 18" VERTICAL SEPARATION CAN BE REDUCED TO A MINIMUM OF 6 INCHES, UTILIZING STEEL CASING PIPE WITH THE BOROUGH'S APPROVAL.

**Quarryville Borough Authority**

**STANDARD DETAIL - WATER SYSTEM**

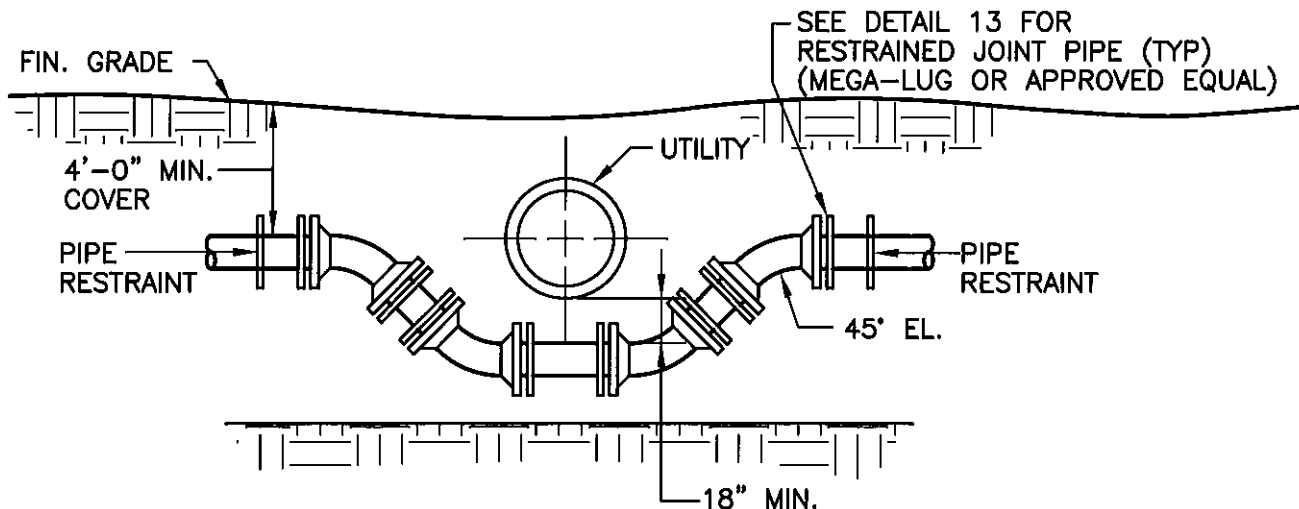
**ARRCO**

108 West Airport Road  
Lifitz, Pennsylvania 17543  
Tel 717.569.7021

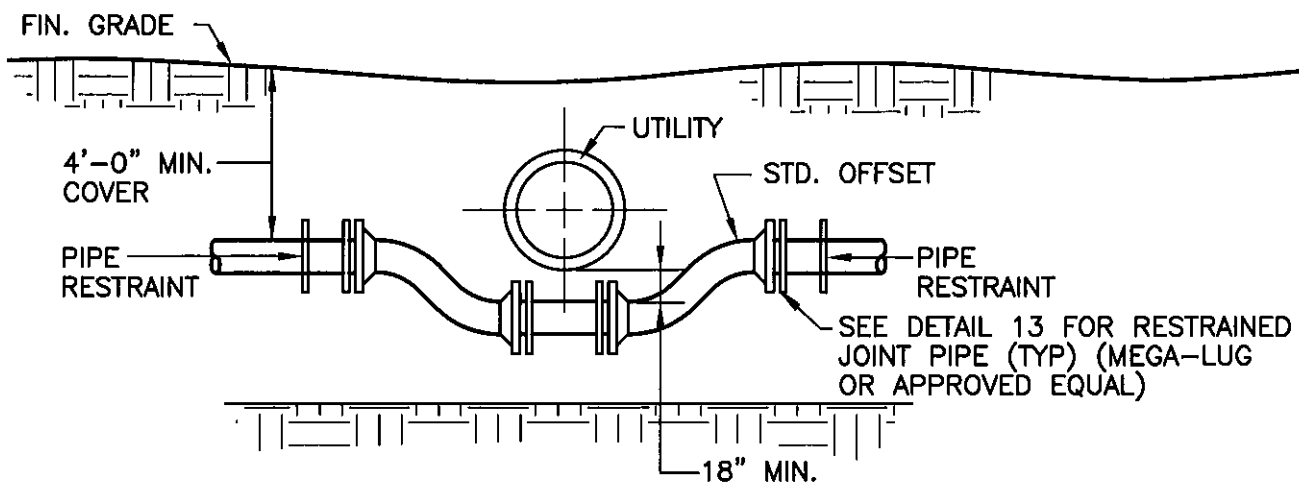
**STANDARD WATER MAIN  
CROSSING BENEATH UTILITIES**

DATE:  
OCTOBER 2016

DETAIL:  
6



### USING ELBOWS



### USING STD. OFFSETS

**Quarryville Borough Authority**

**STANDARD DETAIL - WATER SYSTEM**

**ARRC**

108 West Airport Road  
Lititz, Pennsylvania 17543  
Tel 717.569.7021

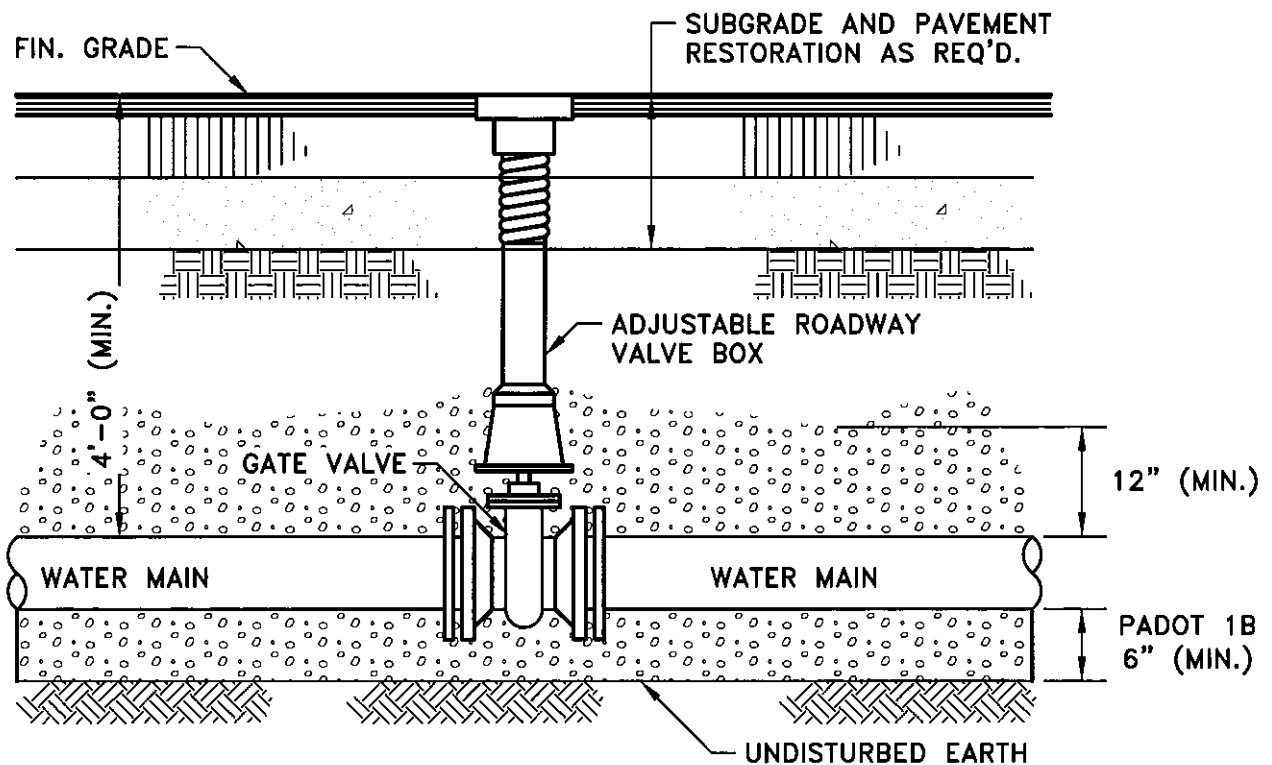
**STANDARD WATER MAIN  
CROSSING UTILITIES USING FITTINGS**

DATE:  
OCTOBER 2016

DETAIL:  
7



Dwg. Name: 00221097.DWG Plotted: 10/12/2016 12:48 PM



**Quarryville Borough Authority**

**STANDARD DETAIL - WATER SYSTEM**

**ARRC**

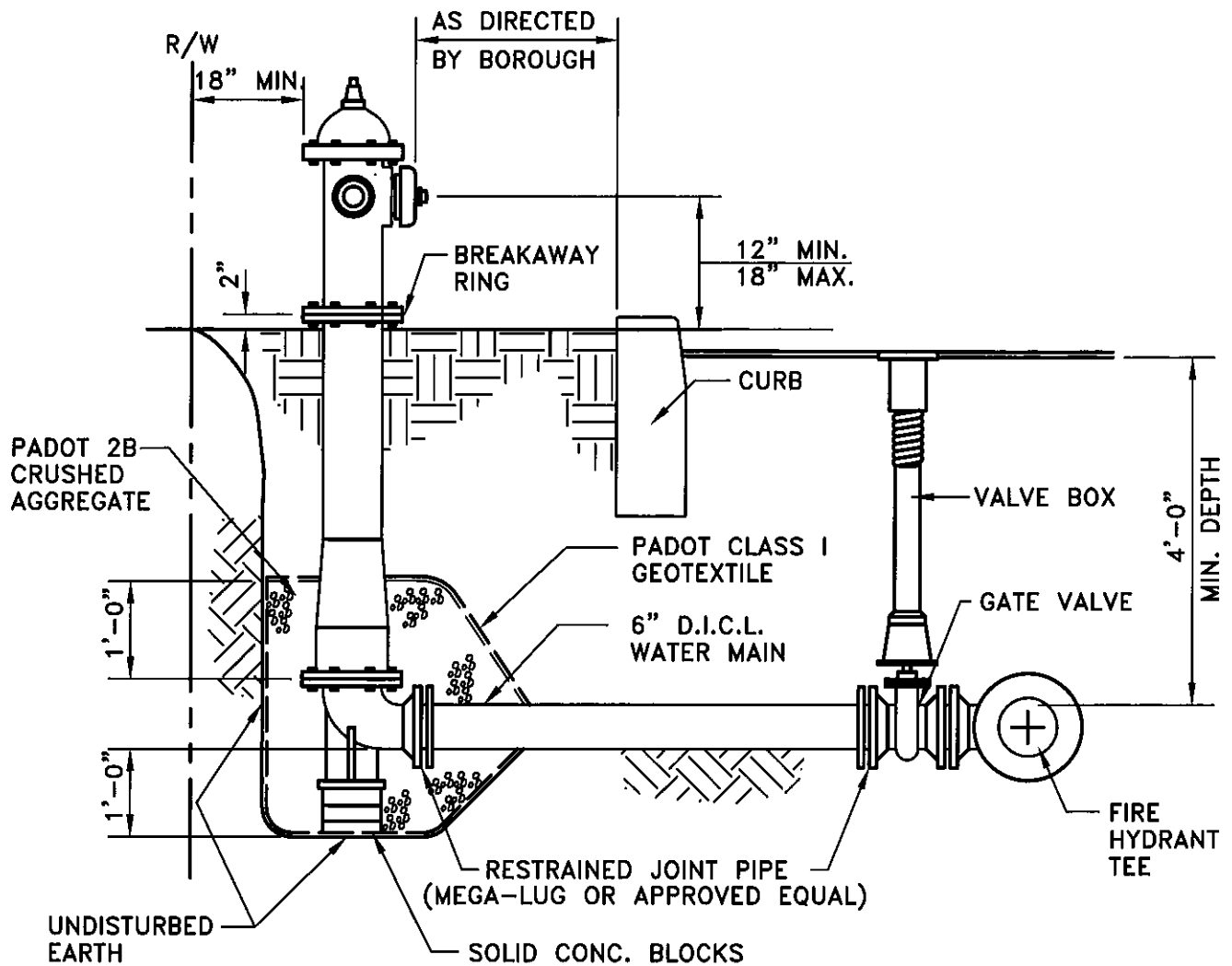
108 West Airport Road  
Littitz, Pennsylvania 17543  
Tel 717.569.7021

**STANDARD VALVE INSTALLATION DETAIL**

DATE: OCTOBER 2016

DETAIL: 8

Dwg. Name: 00221098.DWG Plotted: 10/12/2016 12:49 PM



**Quarryville Borough Authority**

**STANDARD DETAIL - WATER SYSTEM**

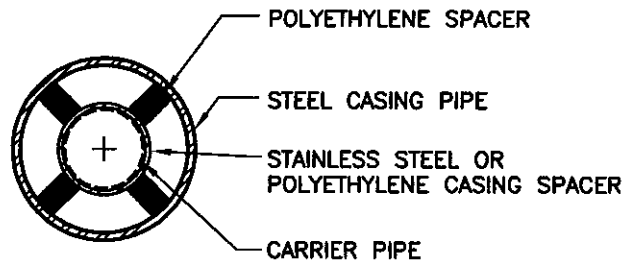
**ARRC**

108 West Airport Road  
Litz, Pennsylvania 17543  
Tel 717.569.7021

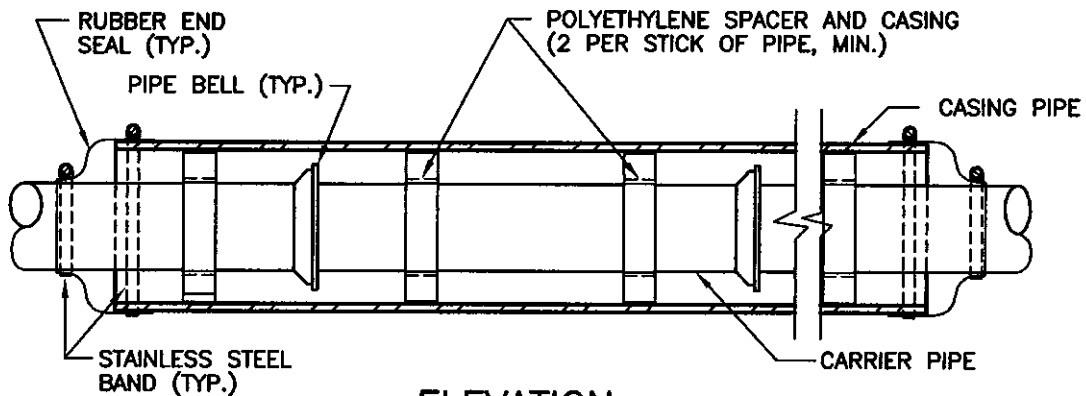
**STANDARD FIRE HYDRANT  
SETTING DETAIL**

DATE:  
OCTOBER 2016

DETAIL:  
9



SECTION



ELEVATION

Quarryville Borough Authority

STANDARD DETAIL - WATER SYSTEM

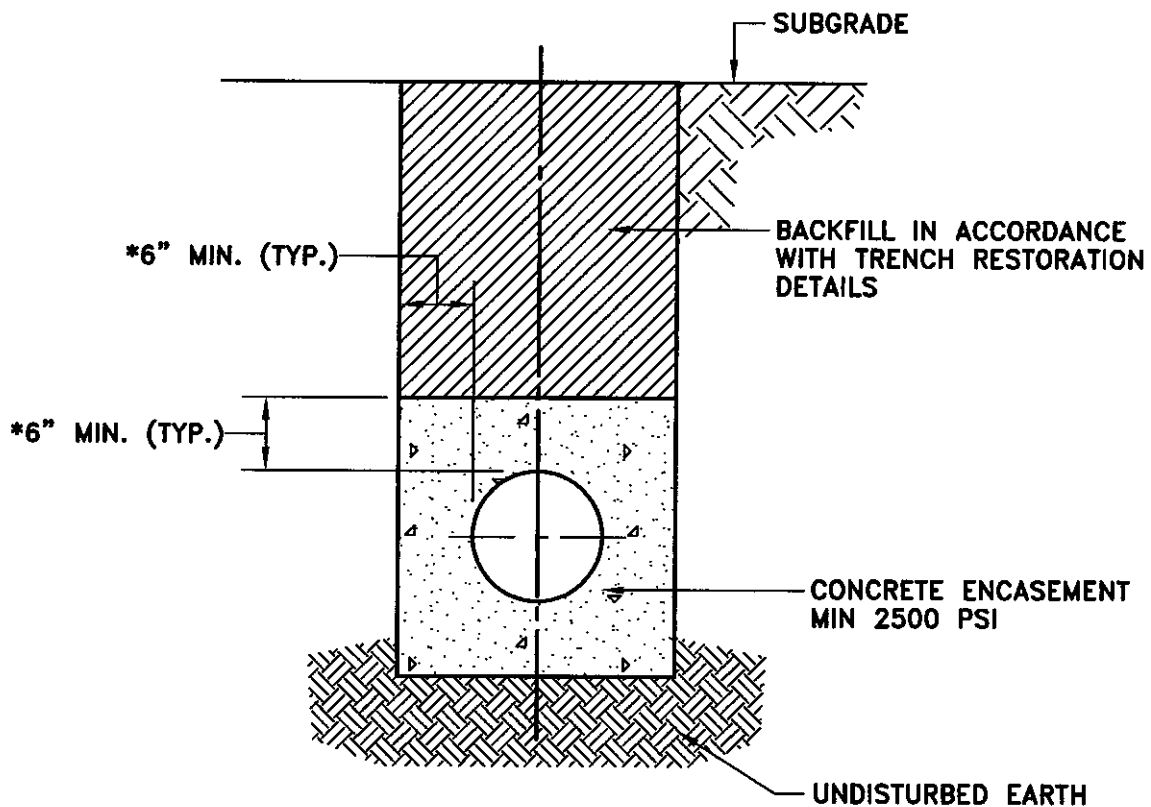
**ARRC**

108 West Airport Road  
Lititz, Pennsylvania 17543  
Tel 717.569.7021

STANDARD CASING CRADLE DETAIL

DATE:  
APRIL 2020

DETAIL:  
10



- \* 6" MINIMUM THICKNESS FOR PIPES UP TO 24 INCHES DIAMETER.
- 9" MINIMUM THICKNESS FOR PIPES 24 INCHES DIAMETER AND GREATER.

Quarryville Borough Authority

STANDARD DETAIL – WATER SYSTEM

**ARRC**

108 West Airport Road  
Lifitz, Pennsylvania 17543  
Tel 717.569.7021

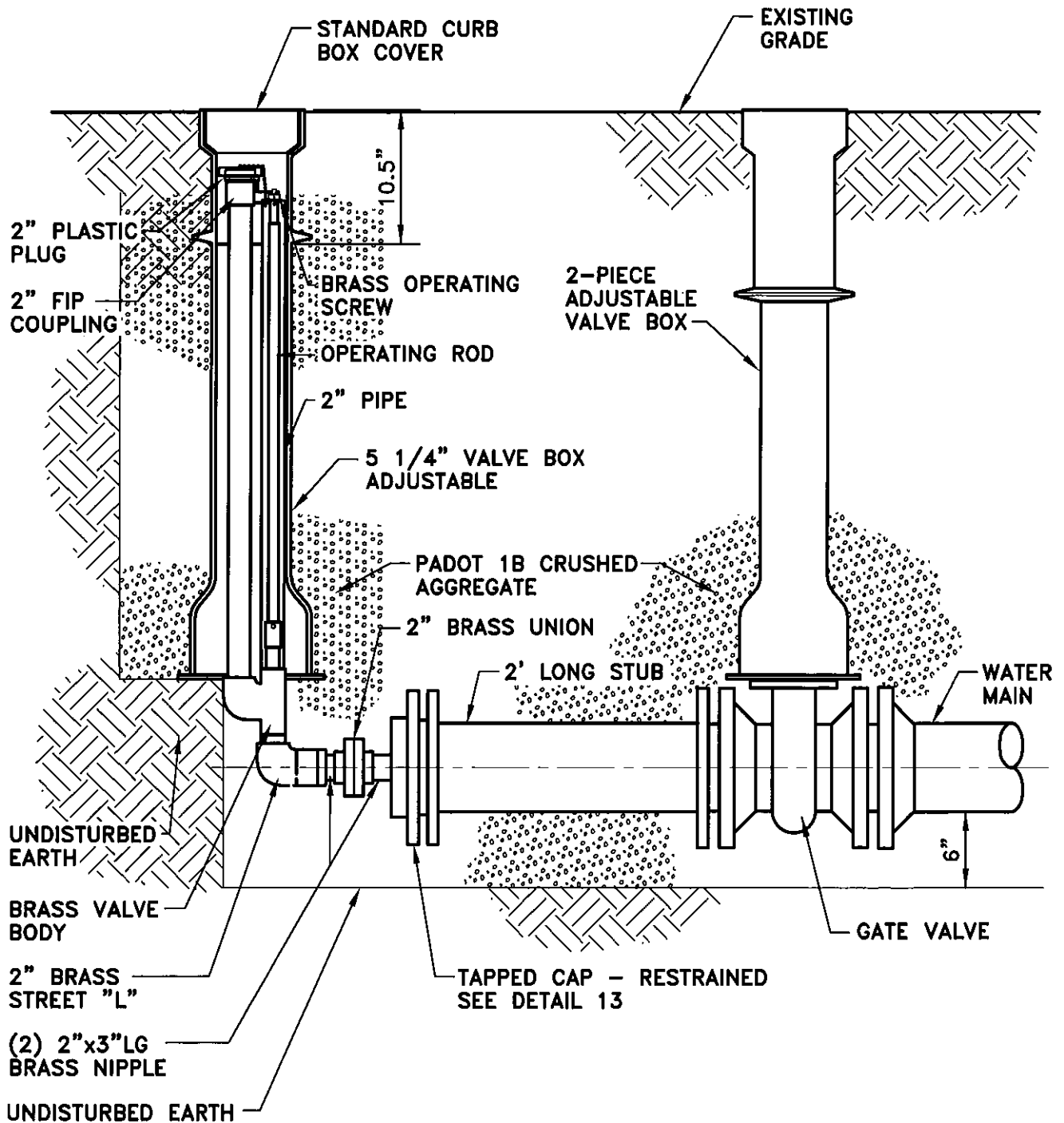
STANDARD CONCRETE ENCASEMENT DETAIL  
(SPECIAL EXCEPTION ONLY)

DATE:  
APRIL 2020

DETAIL:  
11



Dwg. Name: 00221099.DWG Plotted: 10/12/2016 12:49 PM



**Quarryville Borough Authority**

**STANDARD DETAIL - WATER SYSTEM**

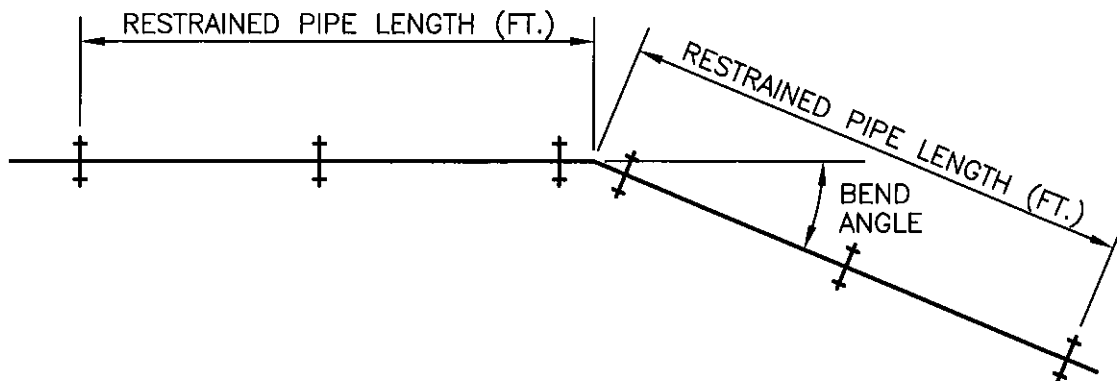
**ARRG**

108 West Airport Road  
Lititz, Pennsylvania 17543  
Tel 717.569.7021

**TYPICAL BLOW-OFF HYDRANT DETAIL**

DATE: OCTOBER 2016

DETAIL: 12



RESTRAINED PIPE LENGTH SCHEDULE					
PIPE DIAMETER	HORIZONTAL & VERTICAL UP BENDS				
	90°	45°	22 1/2°	11 1/4°	PLUGS & TEES
6"	18.3'	7.6'	3.6'	1.8'	50'
8"	24.0'	9.9'	4.8'	2.4'	65'
10"	28.6'	11.9'	5.7'	2.8'	75'
12"	33.4'	13.9'	6.7'	3.3'	90'
14"	38.1'	15.8'	7.6'	3.7'	100'
16"	42.4'	17.6'	8.4'	4.2'	115'

\* ADD 40% TO LENGTH IF PIPE IS POLYETHYLENE ENCASED.

RESTRAINED PIPE LENGTH SCHEDULE			
PIPE DIAMETER	VERTICAL DOWN BENDS		
	45°	22 1/2°	11 1/4°
6"	23.3'	13.2'	7.0'
8"	29.8'	16.9'	9.0'
10"	35.7'	20.2'	10.7'
12"	41.4'	23.4'	12.4'
14"	46.8'	26.4'	14.0'
16"	52.1'	29.4'	15.6'

\* ADD 40% TO LENGTH IF PIPE IS POLYETHYLENE ENCASED.

NOTE: ALL LENGTHS BASED ON 150 PSI MAXIMUM PRESSURE. FOR HIGHER PRESSURES, INCREASE LENGTHS IN PROPORTION TO PRESSURE RATIO.

**Quarryville Borough Authority**

**STANDARD DETAIL - WATER SYSTEM**

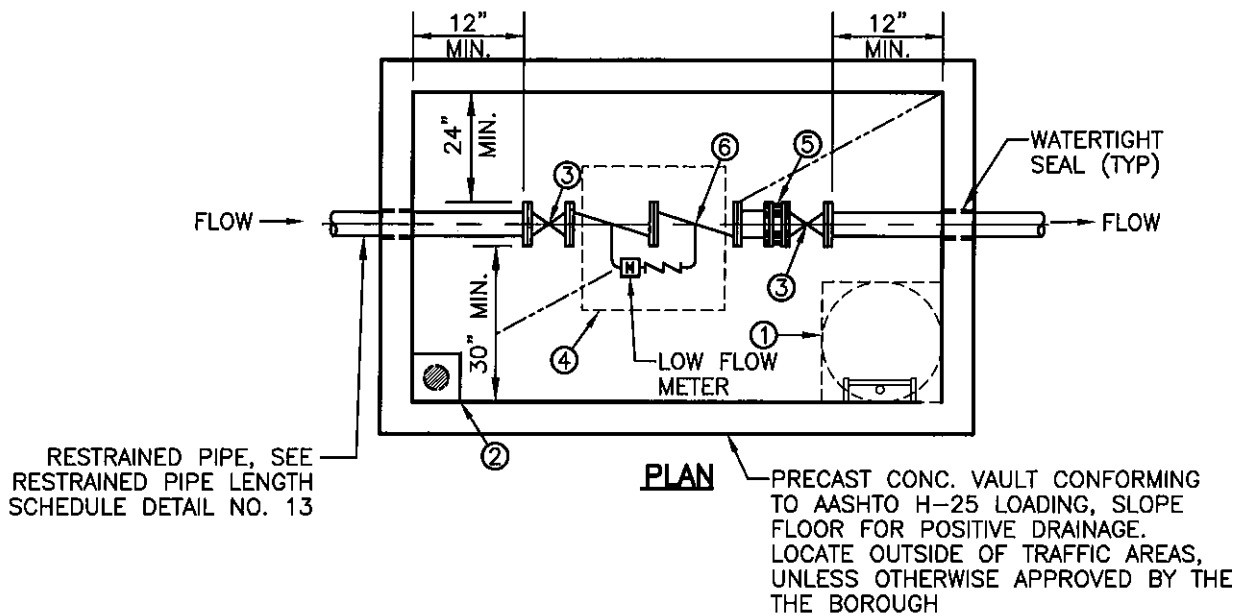
**ARRC**

108 West Airport Road  
Lititz, Pennsylvania 17543  
Tel 717.569.7021

**RESTRAINED PIPE LENGTH SCHEDULE**

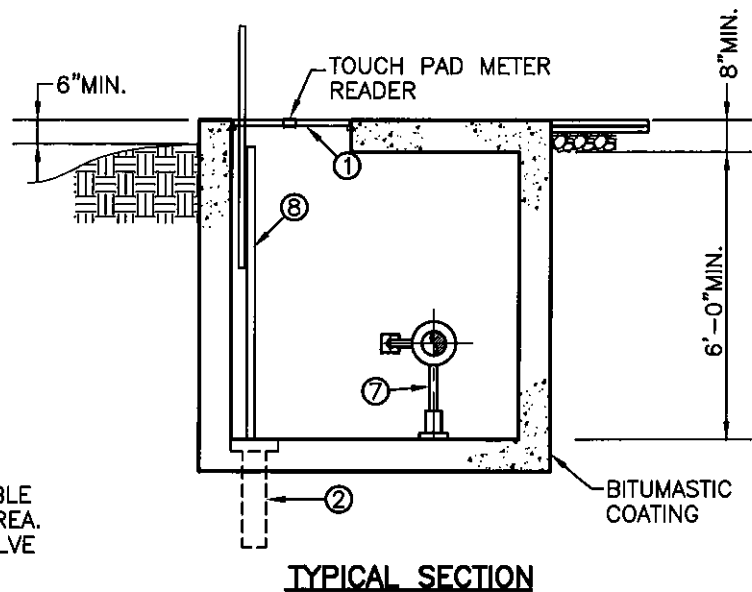
DATE:  
OCTOBER 2016

DETAIL:  
13



**KEY NOTES:**

- ① 30"Ø MANHOLE COVER (TRAFFIC AREAS) OR 30" SQ. WATERTIGHT AL. ACCESS HATCH (NON TRAFFIC AREAS).
- ② 2' LENGTH OF 6" DIP HALF FILLED WITH 1" GRAVEL. PIPE SHALL CONTAIN A CHECK VALVE OR OTHER MEANS OF PROTECTION TO PREVENT GROUND WATER FLOW INTO VAULT AS APPROVED BY THE BOROUGH.
- ③ OS&Y GATE VALVE
- ④ 36" SQ. (MIN.) WATERTIGHT HATCH. SUITABLE FOR H-25 IMPACT LOADING IN TRAFFIC AREA. POSITION HATCH OVER DOUBLE CHECK VALVE ASSEMBLY FOR ABOVE GRADE READING.
- ⑤ FLANGED ADAPTER (RESTRAINED)
- ⑥ AMES 3001 DOUBLE CHECK DETECTOR ASSEMBLY W/LOW FLOW METER & DOUBLE CHECK VALVE.
- ⑦ STN. STL. ADJUSTABLE PIPE SADDLE SUPPORTS.
- ⑧ AL. LADDER W/ EXTENDIBLE STN STL CENTER SAFETY POST



**Quarryville Borough Authority**

**STANDARD DETAIL - WATER SYSTEM**

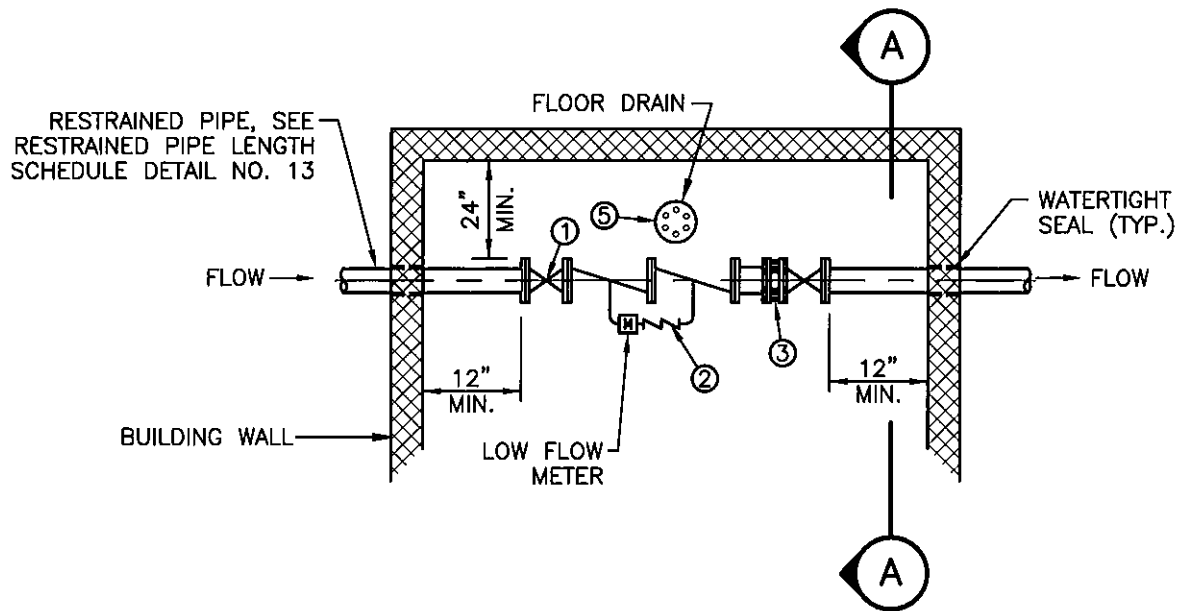
**ARRC**

108 West Airport Road  
Litzitz, Pennsylvania 17543  
Tel 717.569.7021

**FIRE SERVICE SETTING DETAIL - VAULT INSTALLATION  
(SPECIAL EXCEPTION ONLY)**

DATE: OCTOBER 2016

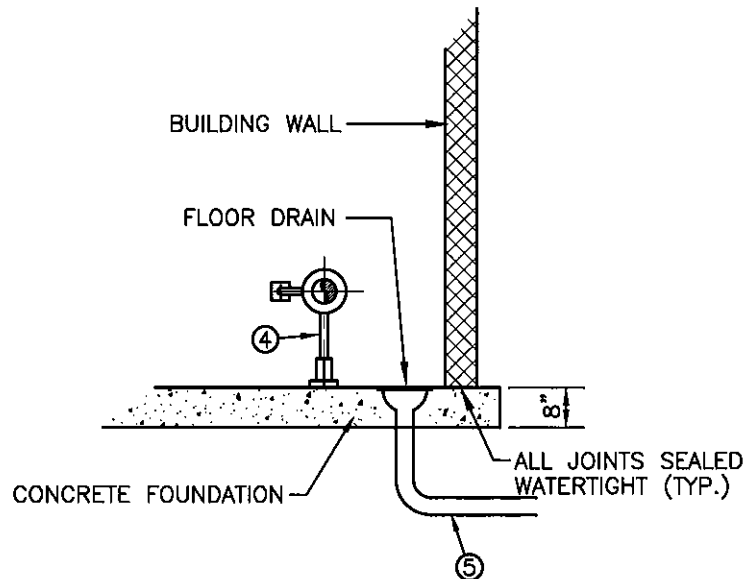
DETAIL: 14



**PLAN**

**KEY NOTES:**

- ① OS&Y GATE VALVE
- ② AMES 3001 DOUBLE CHECK DETECTOR ASSEMBLY W/LOW FLOW METER & DOUBLE CHECK VALVE
- ③ FLANGED ADAPTER (RESTRAINED)
- ④ STN STL ADJUSTABLE SADDLE SUPPORTS
- ⑤ FLOOR DRAIN WITH SUFFICIENT GRAVITY DRAINAGE TO A FREE DISCHARGE SHALL BE PROVIDED WHEN A REDUCED PRESSURE ZONE DEVICE (RPZD) IS REQUIRED



**SECTION A-A**

**Quarryville Borough Authority**

**STANDARD DETAIL - WATER SYSTEM**

**ARRCO**

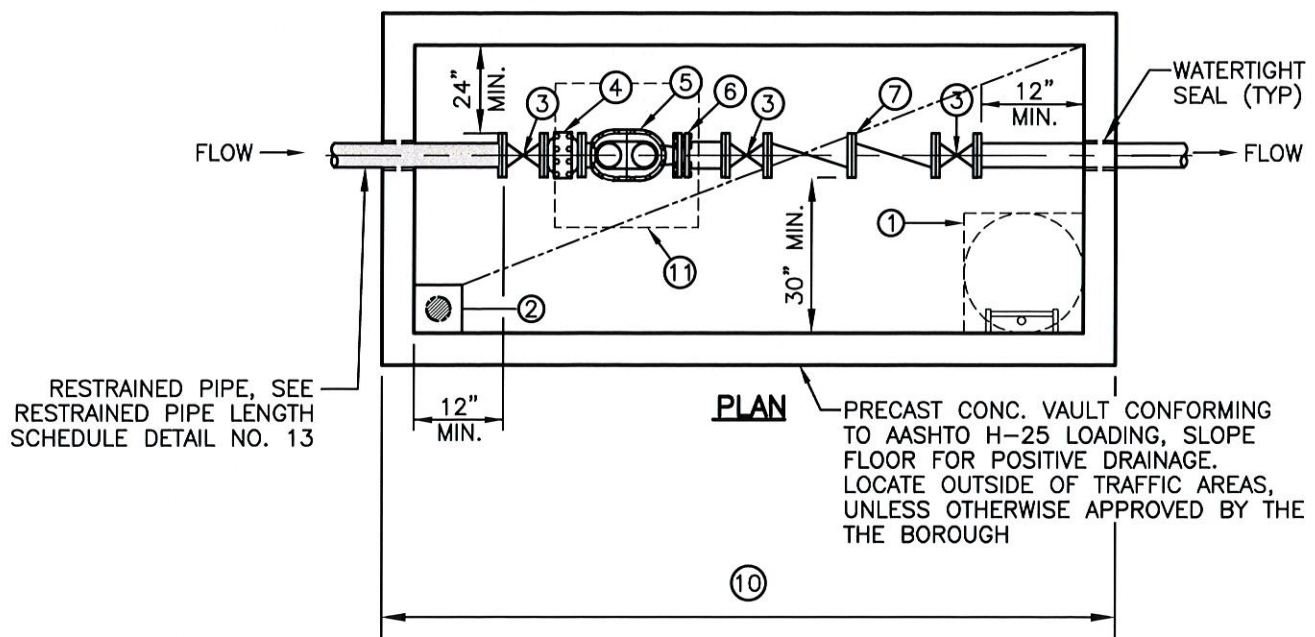
108 West Airport Road  
Lititz, Pennsylvania 17543  
Tel 717.569.7021

**FIRE SERVICE SETTING DETAIL  
BLDG. INSTALLATION**

DATE: OCTOBER 2016

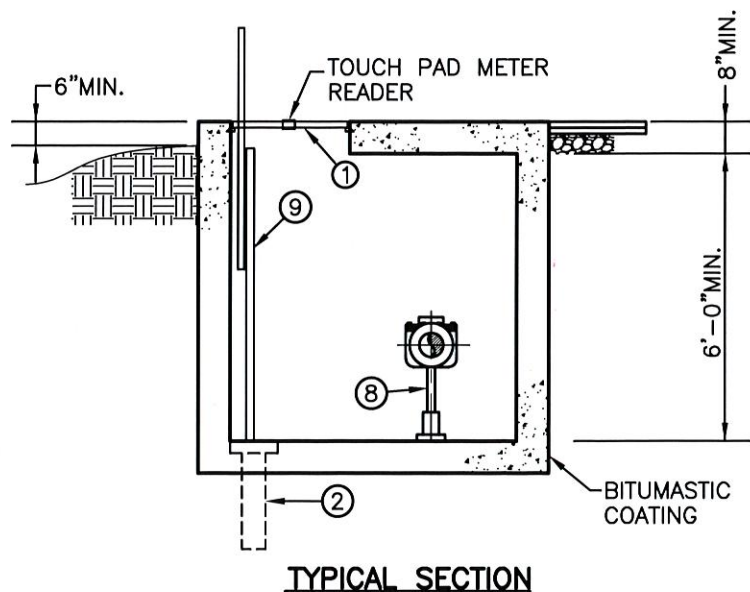
DETAIL: 15





#### KEY NOTES:

- ① 30"Ø MANHOLE COVER (TRAFFIC AREAS) OR 30" SQ. WATERTIGHT AL. ACCESS HATCH (NON TRAFFIC AREAS).
- ② 2' LENGTH OF 6" DIP HALF FILLED WITH 1" GRAVEL. PIPE SHALL CONTAIN A CHECK VALVE OR OTHER MEANS OF PROTECTION TO PREVENT GROUND WATER FLOW INTO VAULT AS APPROVED BY THE BOROUGH
- ③ OS&Y GATE VALVE
- ④ STRAINER MOUNTED UPSTREAM OF METER.
- ⑤ METER FURNISHED & INSTALLED BY CONSUMER (METER & PIPING SHALL BE THE SAME NOMINAL SIZE).
- ⑥ FLANGED ADAPTER (RESTRAINED)
- ⑦ BACKFLOW PREVENTOR: SHALL BE TYPE REQUIRED BASED ON SPECIFIC APPLICATION.
- ⑧ STN. STL. ADJUSTABLE PIPE SADDLE SUPPORTS.
- ⑨ AL. LADDER W/ EXTENDABLE STN STL CENTER SAFETY POST
- ⑩ THE MINIMUM DIMENSIONS OF THE METER PIT SHALL BE INCREASED IN LENGTH ACCORDINGLY TO SATISFY METER MFGR'S STRAIGHT PIPE REQUIREMENTS.



- ⑪ 36" SQ. (MIN.) WATERTIGHT HATCH. SUITABLE FOR H-25 IMPACT LOADING IN TRAFFIC AREA. POSITION HATCH OVER METER FOR ABOVE GRADE READING.

## Quarryville Borough Authority

### STANDARD DETAIL - WATER SYSTEM

**ARRC**

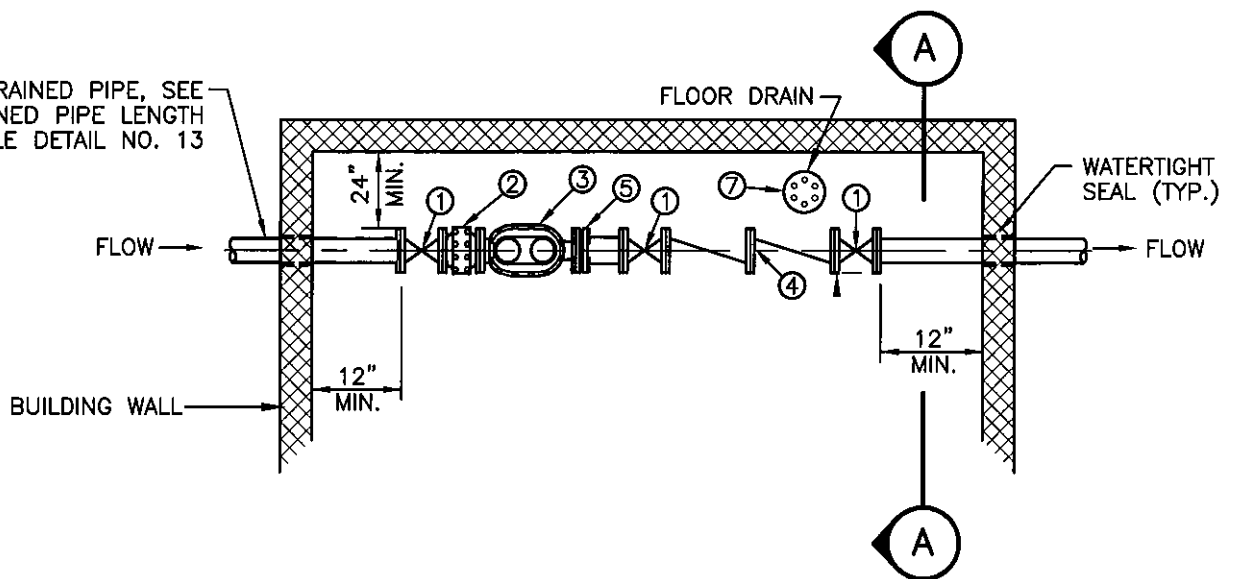
108 West Airport Road  
Lititz, Pennsylvania 17543  
Tel 717.569.7021

### DOMESTIC METER SETTING DETAIL - VAULT INSTALLATION UTILIZING METERS 3' AND LARGER (SPECIAL EXCEPTION ONLY)

DATE:  
OCTOBER 2016

DETAIL:  
16

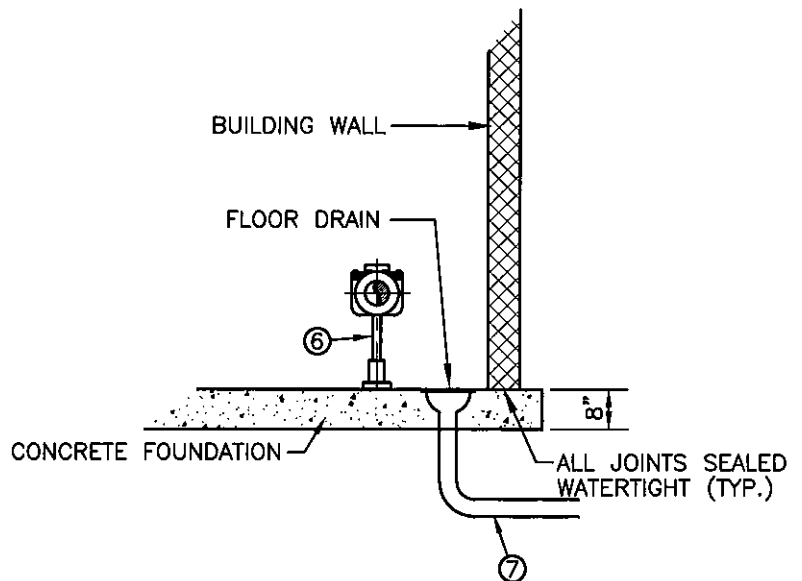
RESTRAINED PIPE, SEE  
RESTRAINED PIPE LENGTH  
SCHEDULE DETAIL NO. 13



**PLAN**

**KEY NOTES:**

- ① OS&Y GATE VALVE
- ② STRAINER MOUNTED UPSTREAM OF METER
- ③ METER FURNISHED & INSTALLED BY CONSUMER. MANUFACTURER'S STRAIGHT PIPE REQUIREMENTS SHALL BE UTILIZED
- ④ BACKFLOW PEVENTOR SHALL BE TYPE BASED ON SPECIFIC APPLICATION
- ⑤ FLANGED ADAPTER (RESTRAINED)
- ⑥ STN STL ADJUSTABLE SADDLE SUPPORTS
- ⑦ FLOOR DRAIN WITH SUFFICIENT GRAVITY DRAINAGE TO A FREE DISCHARGE SHALL BE PROVIDED WHEN A REDUCED PRESSURE ZONE DEVICE (RPZD) IS REQUIRED



**SECTION A-A**

**Quarryville Borough Authority**

**STANDARD DETAIL - WATER SYSTEM**

**ARRC**

108 West Airport Road  
Lititz, Pennsylvania 17543  
Tel 717.569.7021

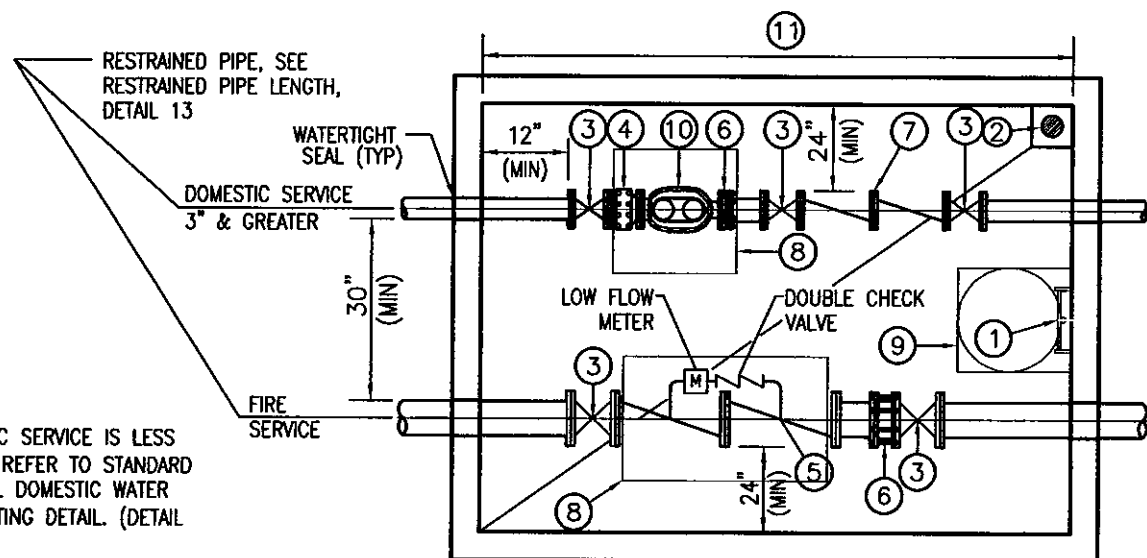
**DOMESTIC METER SETTING DETAIL-BLDG. INSTALLATION  
UTILIZING METERS 3" AND LARGER**

DATE: OCTOBER 2016

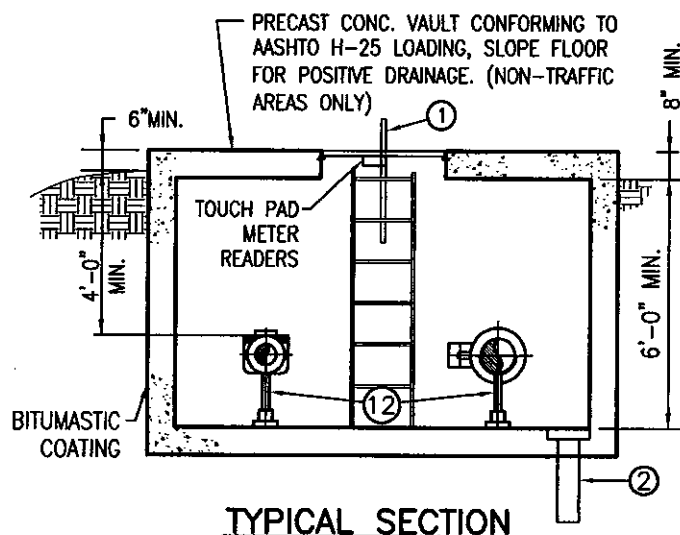
DETAIL: 17

**NOTE:**

IF DOMESTIC SERVICE IS LESS THAN 3"Ø, REFER TO STANDARD RESIDENTIAL DOMESTIC WATER METER SETTING DETAIL. (DETAIL NO. 22)

**PLAN****KEY NOTES:**

- ① AL. LADDER W/EXTENDABLE STN. STL. CENTER SAFETY POST
- ② 2' LENGTH OF 6" DIP HALF FILLED WITH 1" GRAVEL, PIPE SHALL CONTAIN A CHECK VALVE OR OTHER MEANS OF PROTECTION TO PREVENT GROUND WATER FLOW INTO THE VAULT AS APPROVED BY THE AUTHORITY.
- ③ OS&Y GATE VALVE
- ④ STRAINER MOUNTED UPSTREAM OF METER
- ⑤ AMES 3001 DOUBLE CHECK DETECTOR ASSEMBLY W/LOW FLOW BYPASS METER & DOUBLE CHECK VALVE
- ⑥ FLANGED ADAPTER (RESTRAINED)
- ⑦ BACKFLOW PREVENTOR, SHALL BE TYPE REQUIRED BASED ON SPECIFIC APPLICATION
- ⑧ 36" SQ. (MIN.) WATERTIGHT HATCH SUITABLE FOR H-25 WITH IMPACT LOADING IN TRAFFIC AREAS. POSITION HATCH OVER METER FOR ABOVE GRADE READING
- ⑨ 30"Ø MANHOLE COVER (TRAFFIC AREAS) OR 30" SQ. WATERTIGHT AL. ACCESS HATCH (NON TRAFFIC AREAS)



- ⑩ METER FURNISHED & INSTALLED BY CONSUMER (METER & PIPING SHALL BE THE SAME NOMINAL SIZE)
- ⑪ THE MINIMUM DIMENSIONS OF THE METER PIT SHALL BE INCREASED IN LENGTH ACCORDINGLY TO SATISFY METER MFR'S STRAIGHT PIPE REQUIREMENTS
- ⑫ STAINLESS STEEL ADJUSTABLE SADDLE SUPPORTS

Quarryville Borough Authority

STANDARD DETAIL – WATER SYSTEM

**ARRC**

108 West Airport Road  
Lititz, Pennsylvania 17543  
Tel 717.569.7021

COMBINATION FIRE & DOMESTIC METER  
SETTING DETAIL – VAULT INSTALLATION  
(BY SPECIAL EXCEPTION ONLY)

DATE: APRIL 2020

DETAIL: 18

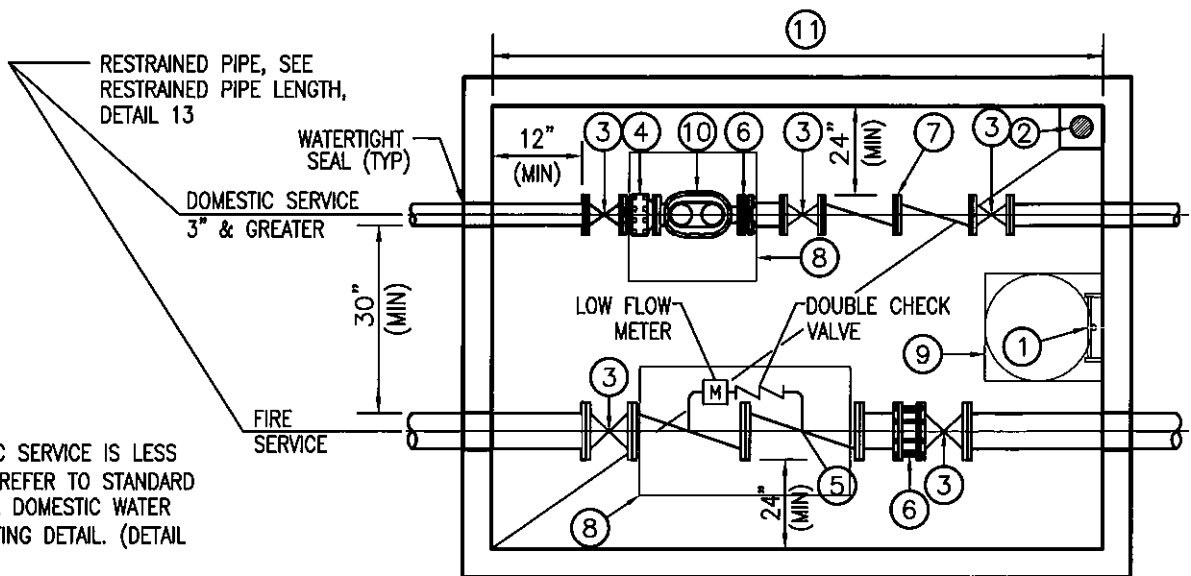
**NOTE:**

IF DOMESTIC SERVICE IS LESS THAN 3"Ø, REFER TO STANDARD RESIDENTIAL DOMESTIC WATER METER SETTING DETAIL. (DETAIL NO. 22)

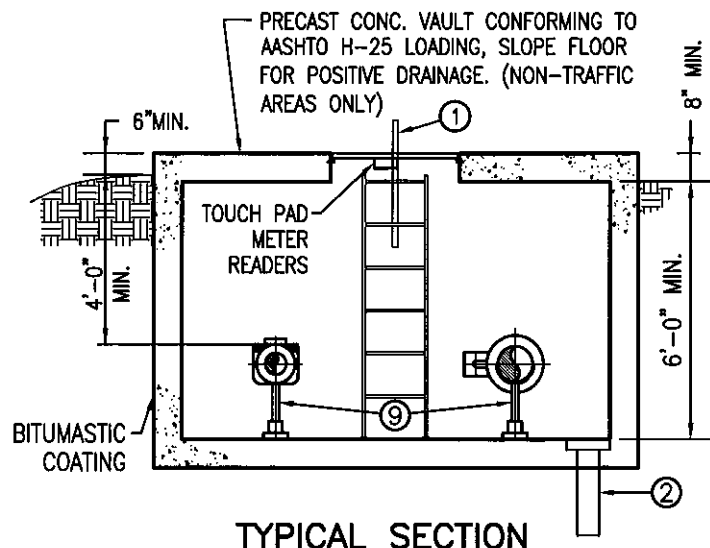
**KEY NOTES:**

- ① AL. LADDER W/EXTENDABLE STN. STL. CENTER SAFETY POST
- ② 2' LENGTH OF 6" DIP HALF FILLED WITH 1" GRAVEL, PIPE SHALL CONTAIN A CHECK VALVE OR OTHER MEANS OF PROTECTION TO PREVENT GROUND WATER FLOW INTO THE VAULT AS APPROVED BY THE BOROUGH
- ③ OS&Y GATE VALVE
- ④ STRAINER MOUNTED UPSTREAM OF METER
- ⑤ AMES 3001 DOUBLE CHECK DETECTOR ASSEMBLY W/LOW FLOW BYPASS METER & DOUBLE CHECK VALVE
- ⑥ FLANGED ADAPTER (RESTRAINED)
- ⑦ BACKFLOW PREVENTOR, SHALL BE TYPE REQUIRED BASED ON SPECIFIC APPLICATION
- ⑧ 36" SQ. (MIN.) WATERTIGHT HATCH SUITABLE FOR H-25 WITH IMPACT LOADING IN TRAFFIC AREAS. POSITION HATCH OVER METER FOR ABOVE GRADE READING
- ⑨ 30"Ø MANHOLE COVER (TRAFFIC AREAS) OR 30" SQ. WATERTIGHT AL. ACCESS HATCH (NON TRAFFIC AREAS)

- ⑩ METER FURNISHED & INSTALLED BY CONSUMER (METER & PIPING SHALL BE THE SAME NOMINAL SIZE)
- ⑪ THE MINIMUM DIMENSIONS OF THE METER PIT SHALL BE INCREASED IN LENGTH ACCORDINGLY TO SATISFY METER MFGR'S STRAIGHT PIPE REQUIREMENTS



**PLAN**



**TYPICAL SECTION**

**Quarryville Borough Authority**

**STANDARD DETAIL - WATER SYSTEM**

**ARRC**

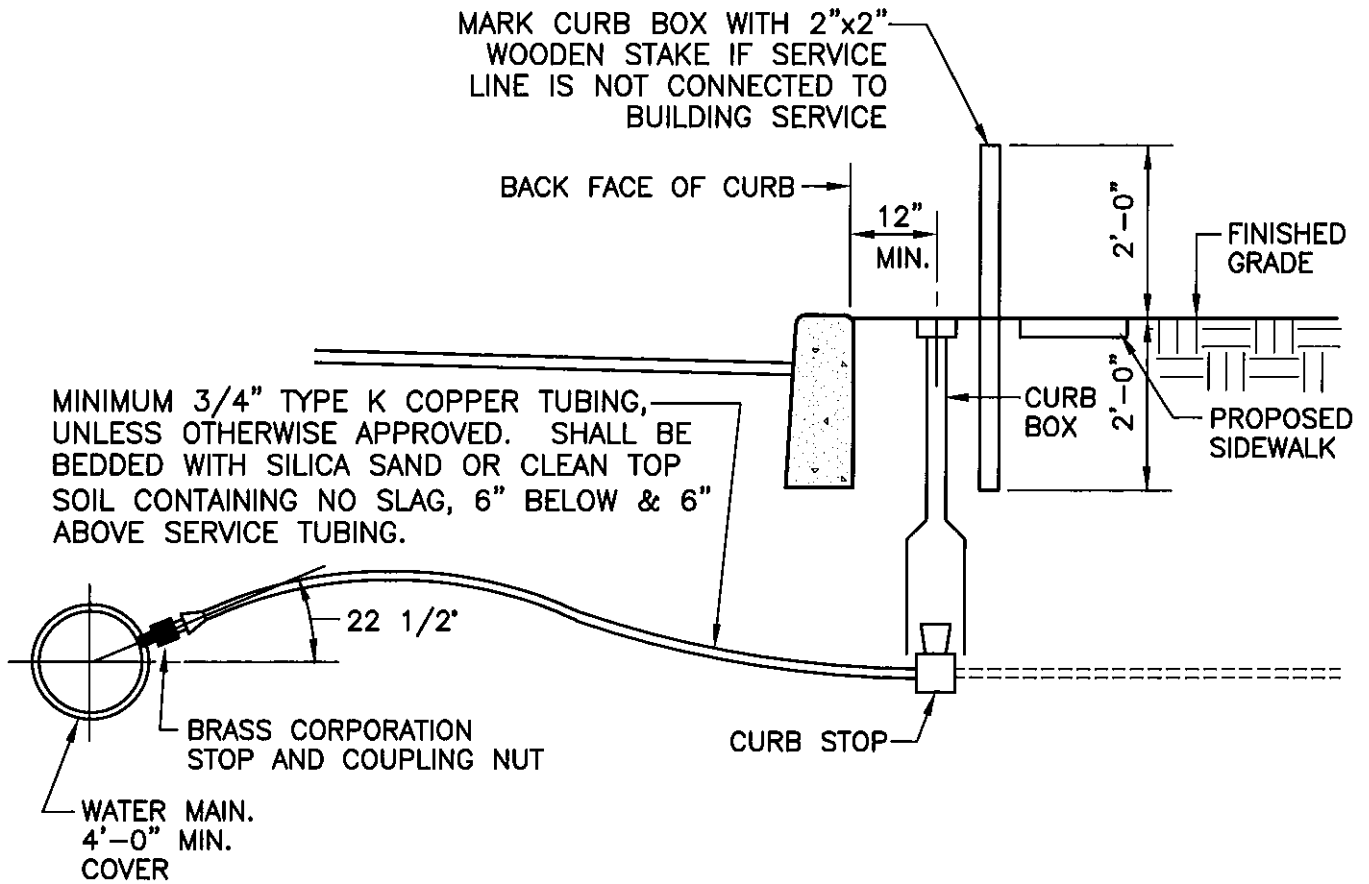
108 West Airport Road  
Lititz, Pennsylvania 17543  
Tel 717.569.7021

**COMBINATION FIRE & DOMESTIC METER  
SETTING DETAIL - VAULT INSTALLATION  
(BY SPECIAL EXCEPTION ONLY)**

DATE:  
OCTOBER 2016

DETAIL:  
18





NOTES:

- 1) IF CURB STOP CAN NOT BE INSTALLED AT LOCATION SHOWN, THE BOROUGH WILL DESIGNATE LOCATION.
- 2) NO CURB STOP SHALL BE LOCATED IN CURB.

**Quarryville Borough Authority**

**STANDARD DETAIL - WATER SYSTEM**

**ARRC**

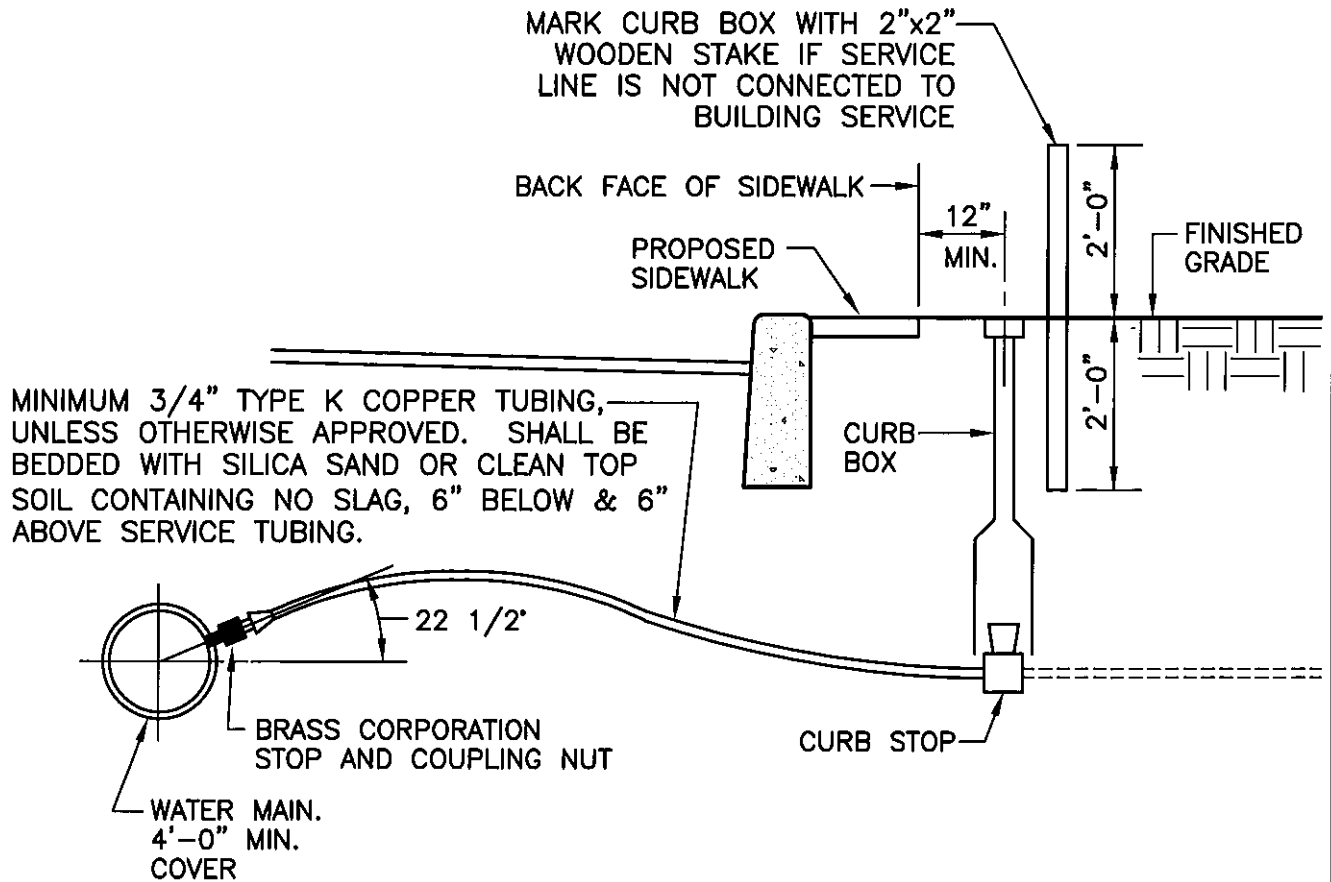
108 West Airport Road  
Lititz, Pennsylvania 17543  
Tel 717.569.7021

**STANDARD WATER SERVICE LINE  
INSTALLATION (ROADWAY w/CURBING)**

DATE:  
OCTOBER 2016

DETAIL:  
19

Dwg. Name: 00221106.DWG Plotted: 10/12/2016 12:55 PM



NOTES:

- 1) IF CURB STOP CAN NOT BE INSTALLED AT LOCATION SHOWN, THE BOROUGH WILL DESIGNATE LOCATION.
- 2) NO CURB STOP SHALL BE LOCATED IN CURB.

**Quarryville Borough Authority**

**STANDARD DETAIL - WATER SYSTEM**

**ARRC**

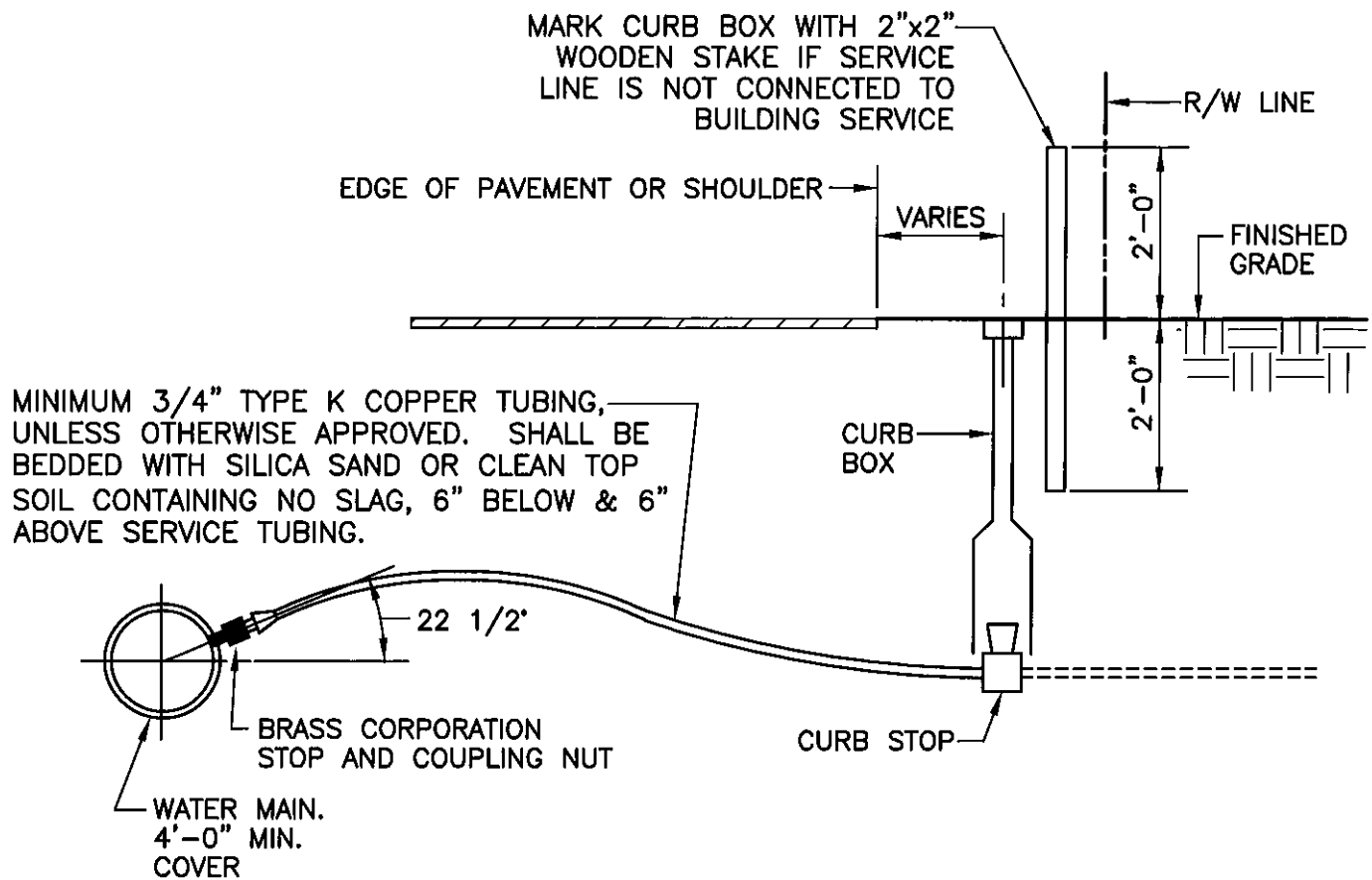
108 West Airport Road  
Lititz, Pennsylvania 17543  
Tel 717.569.7021

**STANDARD WATER SERVICE LINE  
INSTALLATION (BEHIND CURB & SIDEWALK)**

DATE:  
OCTOBER 2016

DETAIL:  
20

Dwg. Name: 00221106.DWG Plotted: 10/12/2016 12:55 PM



NOTES:

- 1) IF CURB STOP CAN NOT BE INSTALLED AT LOCATION SHOWN, THE BOROUGH WILL DESIGNATE LOCATION.
- 2) NO CURB STOP SHALL BE LOCATED IN CURB.

**Quarryville Borough Authority**

**STANDARD DETAIL - WATER SYSTEM**

**ARRC**

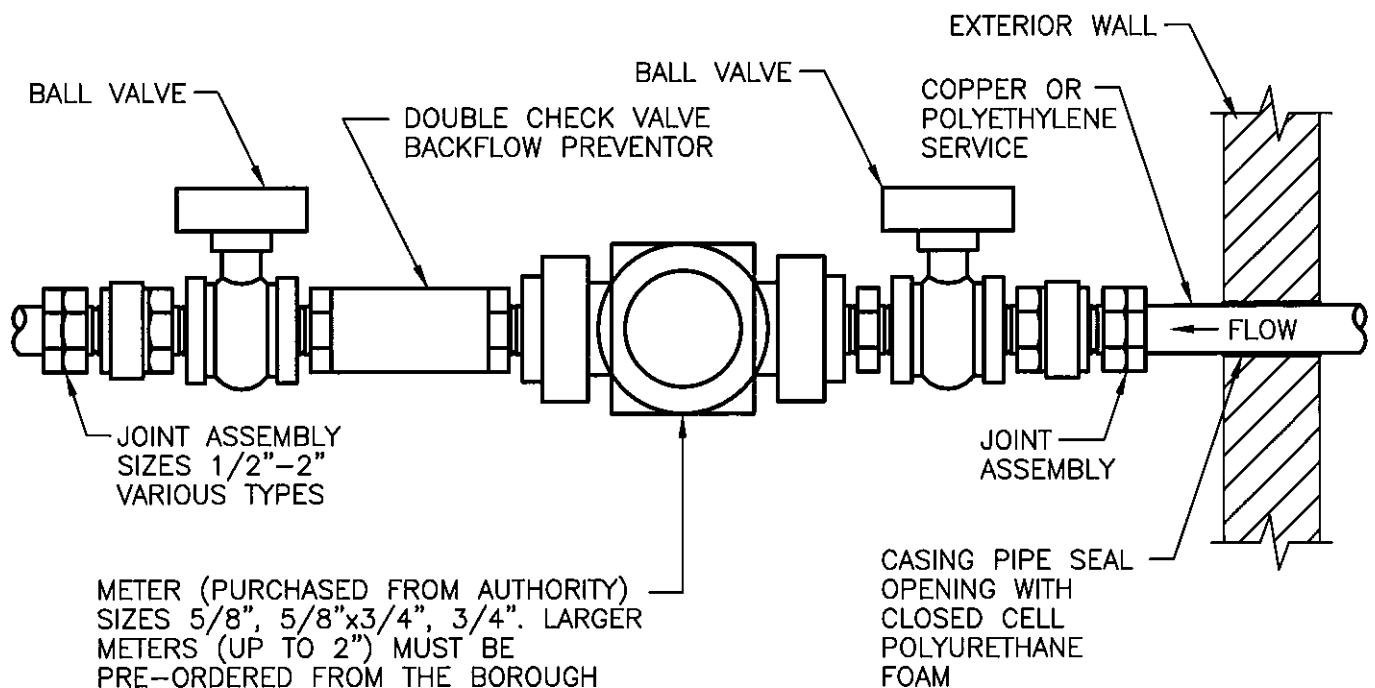
108 West Airport Road  
Lititz, Pennsylvania 17543  
Tel 717.569.7021

**STANDARD WATER SERVICE LINE  
INSTALLATION (ROADWAY w/o CURBING)**

DATE:  
OCTOBER 2016

DETAIL:  
21

NOTE: SHOULD THE AUTHORITY DECIDE THAT METER SHALL BE PLACED OUTSIDE OF BUILDING, THE REMOTE METER SHALL HAVE SAME GENERAL CONFIGURATION AS SHOWN ON THIS DETAIL AND MUST BE APPROVED BY THE BOROUGH.



Dwg. Name: 00221107.DWG Plotted: 10/18/2016 8:07 AM

## Quarryville Borough Authority

### STANDARD DETAIL - WATER SYSTEM

**ARRC**

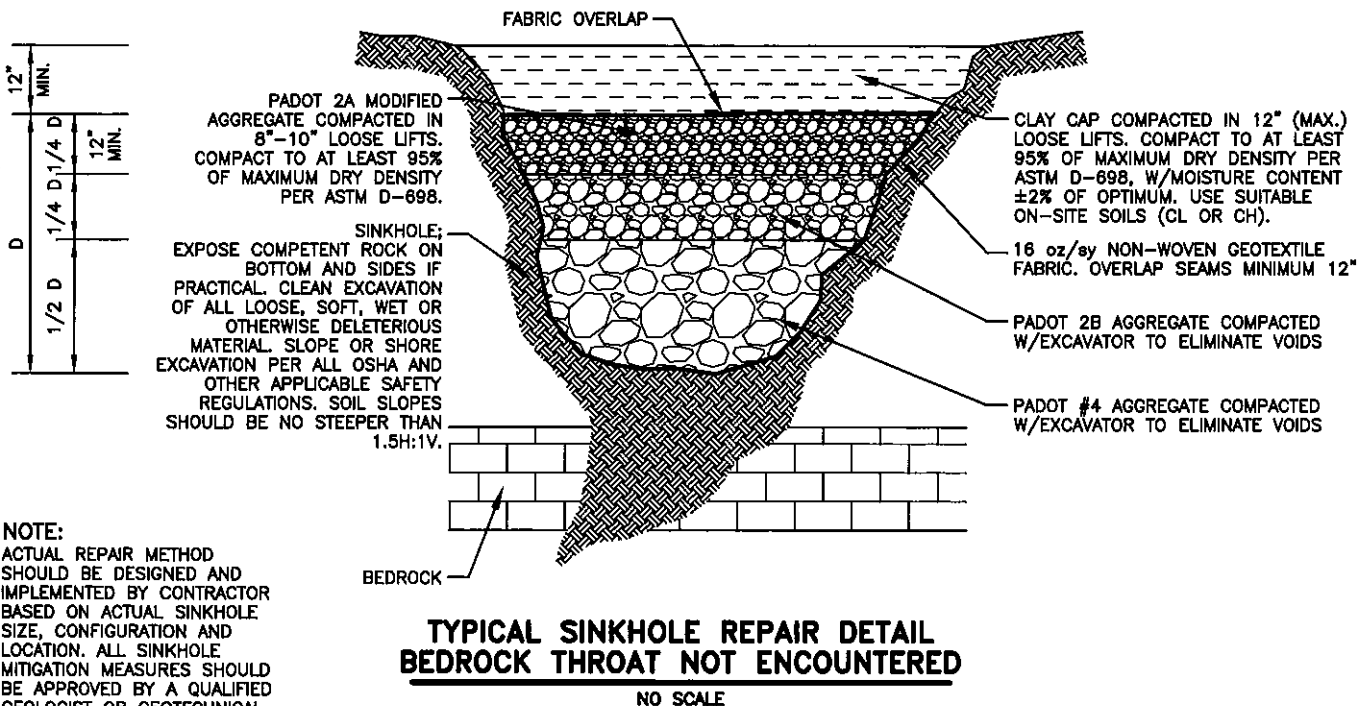
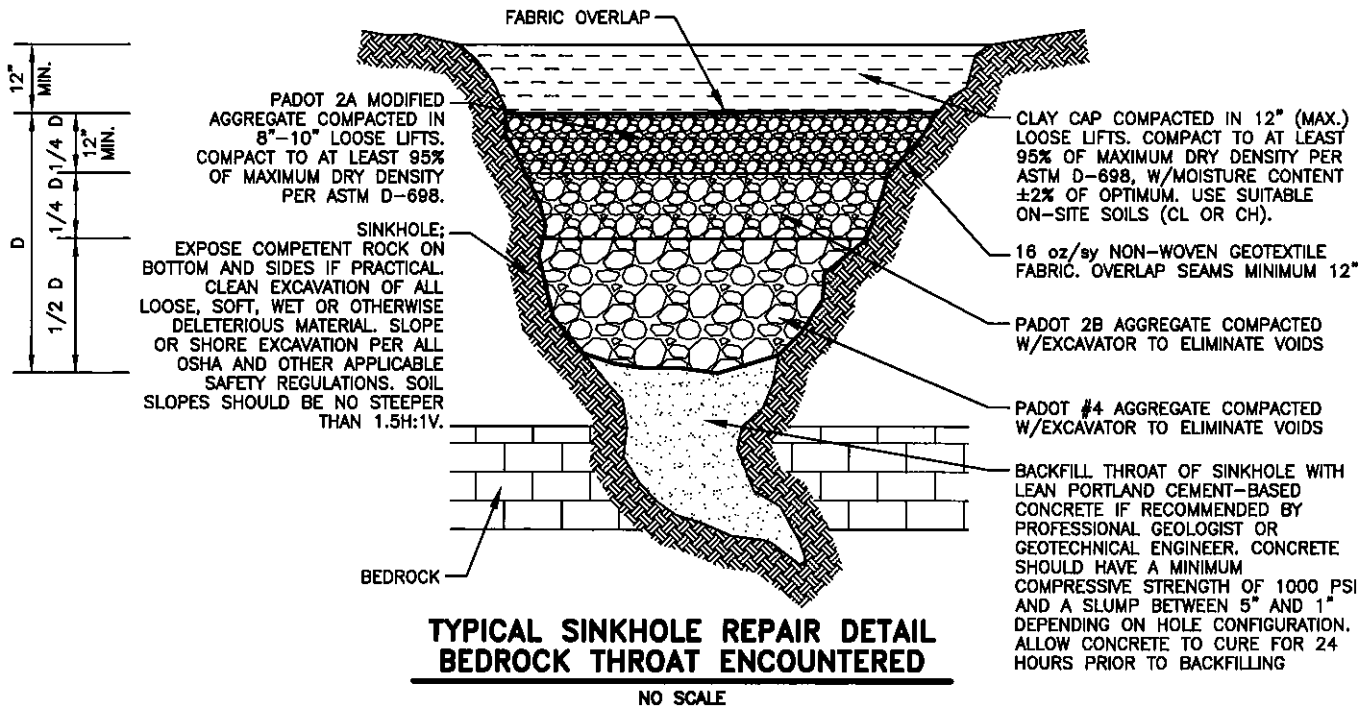
108 West Airport Road  
Lititz, Pennsylvania 17543  
Tel 717.569.7021

## STANDARD RESIDENTIAL DOMESTIC WATER METER SETTING DETAIL

DATE:  
OCTOBER 2016

DETAIL:  
22





**NOTE:**  
ACTUAL REPAIR METHOD  
SHOULD BE DESIGNED AND  
IMPLEMENTED BY CONTRACTOR  
BASED ON ACTUAL SINKHOLE  
SIZE, CONFIGURATION AND  
LOCATION. ALL SINKHOLE  
MITIGATION MEASURES SHOULD  
BE APPROVED BY A QUALIFIED  
GEOLOGIST OR GEOTECHNICAL  
ENGINEER PRIOR TO  
IMPLEMENTATION.

**Quarryville Borough Authority**

**STANDARD DETAIL - WATER SYSTEM**

**SINKHOLE  
REMEDATION**

**ARRC**

108 West Airport Road  
Lititz, Pennsylvania 17543  
Tel 717.569.7021

DATE:  
OCTOBER 2016

DETAIL:  
23